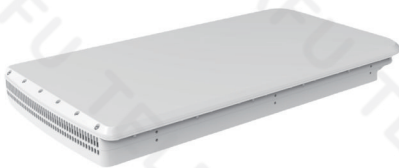


PHASED-ARRAY ANTENNAS



Frequency	TX:29.0-30.0 GHz RX: 17.8-20.2 GHz
MID-Frequency	TX: 1.40-2.40 GHz RX: 0.95-2.15 GHz
Polarization	Circular polarization
Polarization Switching	Auto
Ascanning Angle	Off-axis angle: 0-60° Azimuth angle: 0-360°
Gain	TX: EIRP≥42dBW @0°,29.25GHz RX: G/T≥8.5dB/K @0°,19.45GHz,60K
Tracking Accuracy	≤1/8 times 3dB Beam width



Frequency	TX:29.0-30.0 GHz RX: 17.8-20.2 GHz
MID-Frequency	TX: 1.40-2.40 GHz RX: 0.95-2.15 GHz
Polarization	Circular polarization
Polarization Switching	Auto
Ascanning Angle	Off-axis angle: 0-60° Azimuth angle: 0-360°
Gain	TX: EIRP≥48dBW @0°,29.25GHz RX: G/T≥11dB/K @0°,19.45GHz,60K
Tracking Accuracy	≤1/8 times 3dB Beam width
Occlusion Restoration	≤2s (Occlusion time≤2min); ≤30s(2min < Occlusion time≤5min); ≤60sOcclusion time < 5min);



Frequency	TX:29.0-30.0 GHz RX: 17.8-20.2 GHz
MID-Frequency	TX: 1.40-2.40 GHz RX: 0.95-2.15 GHz
Polarization	Circular polarization
Polarization Switching	Auto
Ascanning Angle	Off-axis angle: 0-60° Azimuth angle: 0-360°
Gain	TX: EIRP≥54dBW @0°,29.25GHz RX: G/T≥12dB/K @0°,19.45GHz,60K
Tracking Accuracy	≤1/8 times 3dB Beam width
Occlusion Restoration	≤2s (Occlusion time≤2min); ≤30s(2min < Occlusion time≤5min); ≤60sOcclusion time < 5min);